

# CraftStone®

manufactured stone veneer



**15<sup>th</sup>** Edition  
CraftStone® Catalogue  
*More Design!*  
*More Colour!*

FEEL<sub>GOOD</sub> LOOK<sub>GOOD</sub> **100%**

[www.craftstone.com.sg](http://www.craftstone.com.sg)

Look out for the latest CraftStone® design and color!

**XII Désign Söolution**  
Learn from the expert!

**DISCOVERSTONE DISCOVERBRICKS**

[www.craftstone.com.sg](http://www.craftstone.com.sg) | a product of Singapore | made in Malaysia



# CraftStone®

## Introduction

Capturing the appeal and essence of natural stone, CraftStone® brings the beauty and appeal of stone into any design or buildings which cannot be matched or achieved by any other building materials.

The simplicity and elegance of CraftStone® enables you to enjoy the unique feeling and homely ambience of nature, providing wide design space and imagination for each individual.

In every prospect, CraftStone® product lends stature and a sense of permanence, turning what might have been an ordinary space into a remarkable designer show piece.



## Advantages

“ In the pursue for greater benefits for our customer, CraftStone® is proud to be awarded with the distinguish GreenLabel Certificate. Together with this GreenLabel award, CraftStone® is a material that is compatible with both human and environmental health. ”



Cert No.: 022-022  
Eco Friendly Building Material

### Interlocking features

Unique only to CraftStone® product, special contouring at the edge provides space for cement grouts to escape and form additional bonding between individual stones and the wall.

### Light-Weight features

Typically one-quarter the weight of the full-thickness wall, CraftStone® eliminates the need for additional footing or wall ties.

### Versatile

Comes in various texture and color that will suit any design without worries on color or tonality differentiation.

### Feasibility

CraftStone® is suitable for both interior and exterior application, with numerous architectural and landscaping accessories for the finishing touch.

### Economical

Installation cost for CraftStone® is often less than half the cost for laying natural stone.

### Durability

Colorfast and virtually maintenance free, all CraftStone® products carry a 25 year limited warranty!



# CraftStone®

## Content

Snow White



pg 4

New Linear



pg 6

Urban Cladding



pg 8

Modern



pg 10

Checker



pg 12

M'Brick



pg 14

Clinker Brick



pg 16

Old-Used Brick



pg 18

Cottage Brick



pg 20

Vintage



pg 22

Classical



pg 24

Country



pg 26

Mountain



pg 28

Stacked



pg 30

Weathered



pg 32

Balinese



pg 34

European



pg 36

Medieval



pg 38

Rustic Castle



pg 40

SandStone



pg 42

Grande



pg 44

LimeStone



pg 46

River Rock



pg 48

Quarry Stone



pg 50

Mix & Match



pg 51

Accessories



pg 52

FloraStone



pg 54

CraftSeal



pg 58

\* The product colors in this catalogue are as accurate as current photography and printing technique allow.  
We suggest you look at actual samples for better representation.

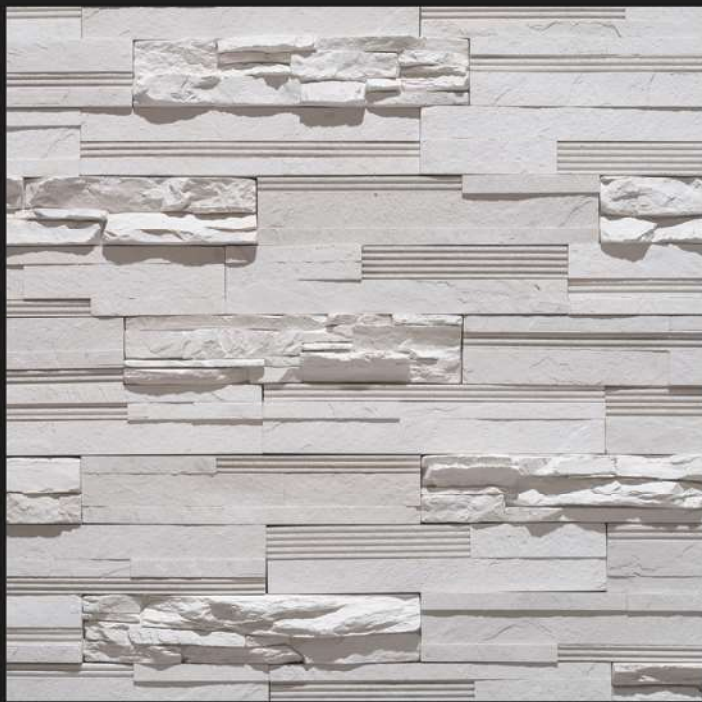




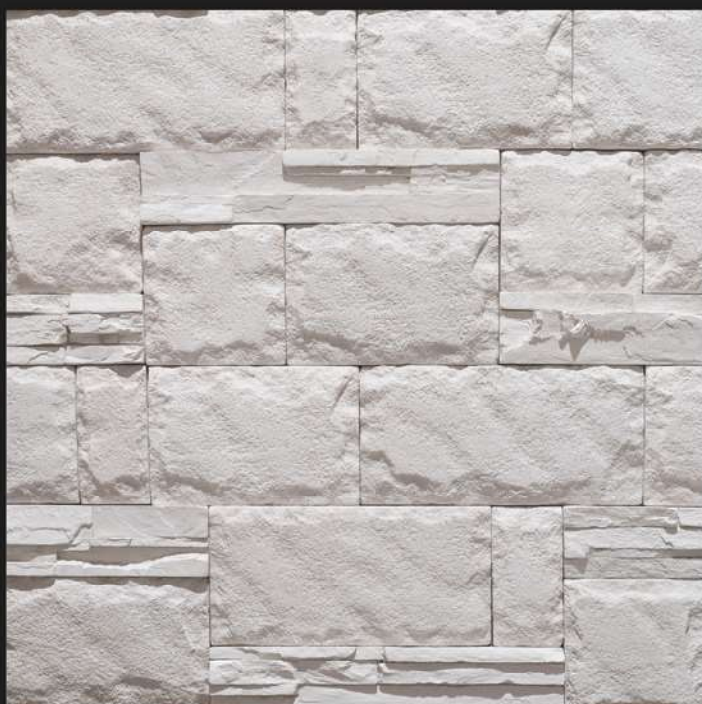
# *Snow White*

## Mix & Match

**Main** 80% Sand Stone, CSI-603S  
**Secondary** 20% New Linear, CSI-133S



**Main** 75% New Linear, CSI-133S  
**Secondary** 25% Classical, CSI-027S



**Main** 80% Rustic Castle, CSI-601S  
**Secondary** 20% Vintage, CSI-021S

**DISCOVERSTONE DISCOVERBRICKS**  
[www.craftstone.com.sg](http://www.craftstone.com.sg) | a product of Singapore | made in Malaysia



# Snow White Collection

Our latest **Snow White** collection is finally here, offering the pristine white finishing that is ever elegant and timeless.

CraftStone's Snow White collection is spread across many of our popular stones and bricks design for home owners to select and create the ideal all-white interior style.



Vintage, CSI-021S **C**



Classical, CSI-027S **C**



New Linear, CSI-133S **F**



Sand Stone, CSI-603S **F**



Old-Used Brick, CSI-093S **C**



Cottage Brick, CSI-903S **F**



Rustic Castle, CSI-601S **F**



Grande Castle, CSI-612S **F**





linéaire**stone**

DISCOVER**STONE** DISCOVER**BRICKS**  
www.craftstone.com.sg | a product of Singapore | made in Malaysia



# New Linear Series

CraftStone latest New Linear Series combine 2 different styles, coarse and stream lines, into one unified design.

Manufactured in standard modular of 50cm in length and 10cm in height, the New Linear Series is made for easy installation.

Available in 6 easy-to-match color, the New Linear Series gives a finishing that fits in every space and modern design.

Profile	Flat
Dimension	L500mm x W100mm x 15~25mm(thk)
Coverage	1.0sq.m per carton
Weight	30kg per carton



Peach, CSI-130 F



Creama, CSI-132 F



Metal Grey, CSI-133 F



Cement Grey, CSI-134 F



Dino Grey, CSI-135 F



Apricot, CSI-138 F



DISCOVER**STONE** DISCOVER**BRICKS**  
www.craftstone.com.sg | a product of Singapore | made in Malaysia

# linéaire**stone**



Urban Sunny, CSI-012



Urban Latte, CSI-011



# Urban Cladding

The new CraftStone® Urban Cladding offer a modern design and colors that cater to a new generation's pursue for simple and elegant design.

Manufactured in standard modular of 50, 30 and 20cm in length and 10cm in height, Urban Cladding is made for easy installation. Available in 4 easy-to-match color, Urban Cladding gives a 3-D finishing, dressing up your house in style to an otherwise plain wall.



Urban Cement, CSI-014



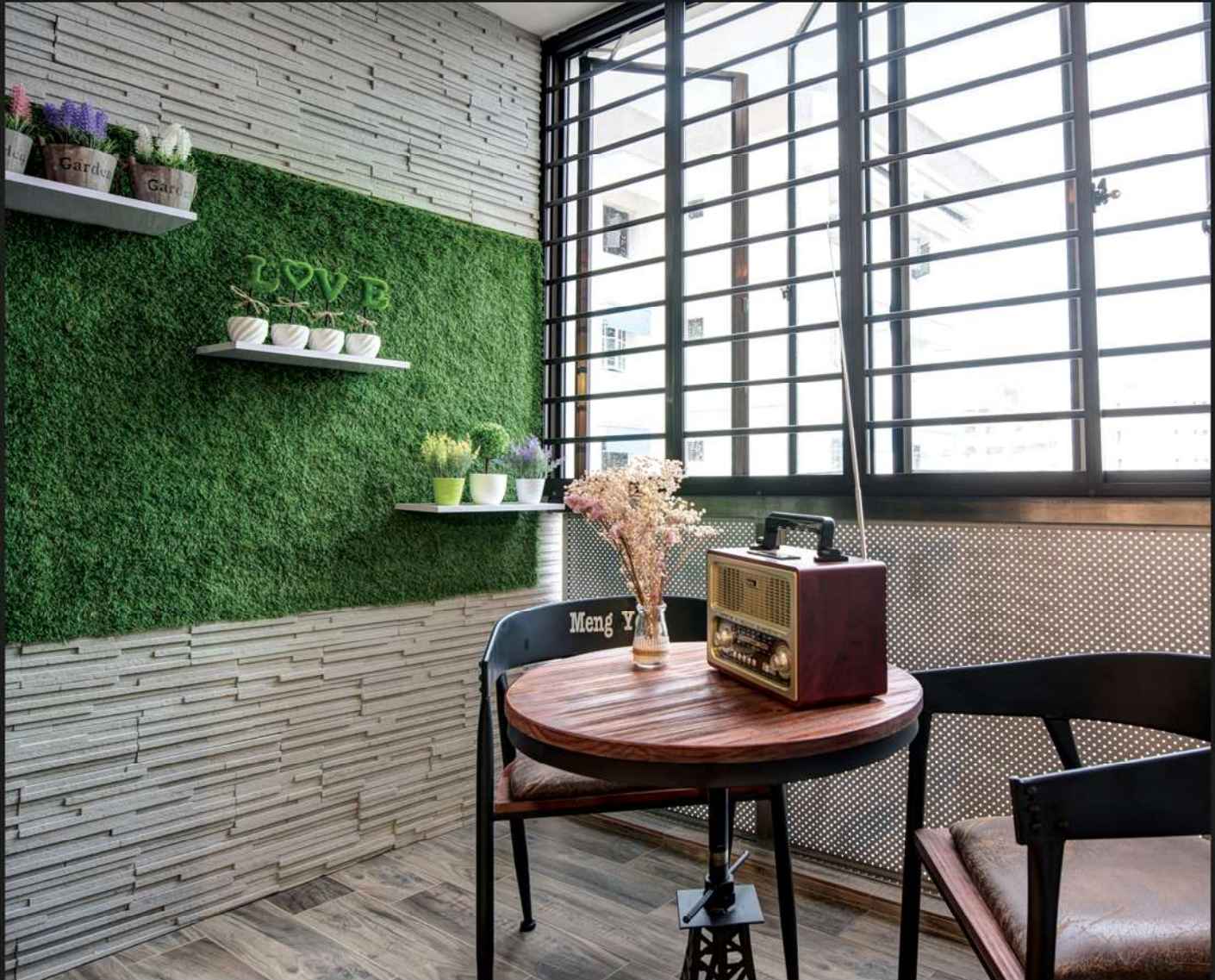
Urban Black, CSI-015

Profile	Flat
Dimension	L500, 300, 200mm x W100mm x 15~25mm(thk)
Coverage	1.0sq.m per carton
Weight	30kg per carton



DISCOVER**STONE** DISCOVER**BRICKS**  
www.craftstone.com.sg | a product of Singapore | made in Malaysia

linéaire**stone**



Modern Sandy, CSI-202



Modern Latte, CSI-201



# Modern Series

The new CraftStone® Modern Series offer a classic finishing with its more subtle and deep lines.

Manufactured in standard modular of 50cm in length and 10cm in height, Modern Series is made for easy installation. Available in 4 easy-to-match color, Modern Series gives a 3-D finishing and fit well in every space and modern design.



Modern Cement, CSI-204



Modern Black, CSI-205

Profile	Flat
Dimension	L500/300/200mm x W100mm x 20~35mm(thk)
Coverage	1.0sq.m per carton
Weight	33kg per carton



DISCOVER**STONE** DISCOVER**BRICKS**  
www.craftstone.com.sg | a product of Singapore | made in Malaysia

# linéaire**stone**



Checker Sandy, CSI-212



Checker Latte, CSI-211



# Checker Series

The new CraftStone® Checker Series offer a 3 dimensional mosaic appeal with its uniform matrix look and color.

Manufactured in standard modular of 50cm in length and 10cm in height, Modern Series is made for easy installation. Available in 4 easy-to-match color, Modern Series gives a 3-D finishing and fit well in every space and modern design.



Checker Cement, CSI-214



Checker Black, CSI-215

Profile	Flat
Dimension	L500mm x W100mm x 20~35mm(thk)
Coverage	1.0sq.m per carton
Weight	33kg per carton



DISCOVER**STONE** DISCOVER**BRICKS**  
www.craftstone.com.sg | a product of Singapore | made in Malaysia

linéaire**stone**





# CraftBricks™

## M'Bricks Series

The new M'Bricks Series offer a modern design and colors which cater to a new generation's pursue for simple and elegant design.

Manufactured in standard modular of 290mm in length and 76mm in height, M'Bricks Series turns conventional bricks into a modern and sleek design by offering these refined Australia bricks in 6 popular pantone colors to easily match modern architecture or design.



Peach, CSI-990 **C**



Creama, CSI-992 **C**



Lily White, CSI-993 **C**



Cement Grey, CSI-994 **C**



Dino Grey, CSI-995 **C**



Apricot, CSI-998 **C**

Profile	Flat & Corner
Dimension	L290mm x W76mm x 15~20mm(thk)
Coverage	1.25sq.m per carton
Weight	26kg per carton



# CraftBricks™

FEEL GOOD  
LOOK GOOD 100%

[www.craftstone.com.sg](http://www.craftstone.com.sg)





# CraftBricks™

## Clinker Bricks

The new Clinker Bricks replicates the finest Australia natural wire-cut bricks and aims to inspire.

Manufactured in standard modular of 76mm in height and 290mm in length, Clinker Bricks perfect proportion and well balanced look fits all areas and design.

The bold and refine look of Clinker Bricks make it easy to blend with other finishes to infuse a warm and rustic look to your design.

Profile	Flat & Corner
Dimension	L290mm x W76mm x 15~20mm(thk)
Coverage	1.25sq.m per carton
Weight	26kg per carton



\* Corner Treatment (CSI-938)



Draconia, CSI-939 C



Teal, CSI-931 C



Cabernet, CSI-932 C



Austin, CSI-933 C



California, CSI-935 C



Manhattan, CSI-936 C



Persian Red, CSI-938 C





# CraftBricks™

FEEL GOOD  
LOOK GOOD 100%

[www.craftstone.com.sg](http://www.craftstone.com.sg)





# CraftBricks™

## Old Used Bricks



\* Corner Treatment (CSI-097)

CraftBricks™ offer an amazing range of natural colors and profile that looks more real than actual bricks.

Manufactured in standard modular of 6cm in height and 20cm in length, CraftBricks™ captures and reveal the look of bricks hidden within a plastered wall.

The coarse finishing and cement stain on each CraftBricks™ is deliberately made to convey the familiar images of run down buildings which have faithfully serve its purpose.

2-ROOM FLEXI (45m²)  
RESORT BLISS



© © ©



Teal, CSI-091 C



Cabernet, CSI-092 C



Austin, CSI-093 C



Citrus, CSI-094 C



Redwood, CSI-097 C



Persian Red, CSI-098 C



California, CSI-095 C



Manhattan, CSI-096 C





CraftBricks™

FEEL GOOD  
LOOK GOOD 100%

[www.craftstone.com.sg](http://www.craftstone.com.sg)



# CraftBricks™

## Cottage Bricks

Cottage Bricks' sharper edge and longer profile replicate the highly refined looks of Japanese bricks.

Manufactured in standard modular of 6cm in height and 21cm in length, Cottage Bricks gives a smoother finishing and appeal of a rustic brick wall.

The fine hairlines and deep wire-cut marks on each Cottage Bricks captured the beauty of traditional hand-made bricks which cannot be replicated by modern machine made bricks.



Profile Flat  
Dimension L210mm x W60mm x 10~15mm(thk)  
Coverage 1.0sq.m per carton  
Weight 23kg per carton



Draconia, CSI-909 F



Teal, CSI-901 F



Cabernet, CSI-902 F



Austin, CSI-903 F



California, CSI-905 F



Manhattan, CSI-906 F



Persian Red, CSI-908 F



Left: Austin, CSI-903 ; Top: Teal, CSI-901 ; Bottom: Persian Red, CSI-908





CraftStone®

FEEL<sub>GOOD</sub> LOOK<sub>GOOD</sub> 100%

[www.craftstone.com.sg](http://www.craftstone.com.sg)

DISCOVER**STONE** DISCOVER**BRICKS**

[www.craftstone.com.sg](http://www.craftstone.com.sg) | a product of Singapore | made in Malaysia



CraftStone®

# Vintage Ledgestone

CraftStone® Vintage Ledgestone series offer an authentic and exciting range of colors for your selection.

Manufactured in standard modular of 10cm in height, Vintage Ledgestone offers quick and easy installation.

Comes in various length of 20cm, 30cm and 50cm, CraftStone® Vintage Ledgestone is the ideal cladding for pier and column, without the hassle of jointing and grouting.



\* Corner Treatment (CSI-026)

**Profile** Flat & Corner  
**Dimension** L500/300/200mm x W100mm  
**Coverage** 0.8sq.m per carton  
**Weight** 28kg per carton



Yellow River, CSI-018 C



Black Canyon, CSI-019 C



Yellow Valley, CSI-020 C



Ocean Mist, CSI-024 C



Alpine, CSI-021 C



Pewter Grey, CSI-025 C



Champagne, CSI-022 C



Mocha, CSI-026 C



Apricot, CSI-023 C



Left: Mocha, CSI-026 ; Top: Black Canyon, CSI-019 ; Bottom: Apricot, CSI-023





CraftStone®

FEEL<sub>GOOD</sub>  
LOOK GOOD 100%

[www.craftstone.com.sg](http://www.craftstone.com.sg)

DISCOVER**STONE** DISCOVER**BRICKS**

[www.craftstone.com.sg](http://www.craftstone.com.sg) | a product of Singapore | made in Malaysia



CraftStone®

# Classical Ledgestone

For those who prefer stone with sharper details, the thicker and raw appeal of Classical Ledgestone may be the answer.

Manufactured in standard modular of 10cm in height, Classical Ledgestone archive the popular stacked stone look with minimum hassle.

The distinguish look and strong appeal of CraftStone® Classical Ledgestone easily fits into any design, bring attention to an otherwise plain space.



Bailey Cream, CSI-027 C



Silver Grey, CSI-028 C



Walnut, CSI-029 C



Ponderosa, CSI-6150 C



\* Corner Treatment (CSI-029)

Profile Flat & Corner  
Dimension L500/300/200mm x W100mm  
Coverage 0.8sq.m per carton  
Weight 33kg per carton







CraftStone<sup>®</sup>

FEEL<sub>LOOK</sub> GOOD 100%

[www.craftstone.com.sg](http://www.craftstone.com.sg)

DISCOVER**STONE** DISCOVER**BRICKS**

[www.craftstone.com.sg](http://www.craftstone.com.sg) | a product of Singapore | made in Malaysia



CraftStone®

# Country Ledgestone

For the more rugged and textured appeal,  
chose the unique and highly defined  
CraftStone® Country Ledgestone series.

Manufactured in standard modular of 12cm in height  
and 42cm in length, Country Ledgestone offers  
quick and easy solution to change the  
outlook of any place entirely.

Profile  
Dimension  
Coverage  
Weight

Flat & Corner  
L420mm x W120mm  
0.8sq.m per carton  
29kg per carton

Simple, yet strong in finishing, Country Ledgestone  
is easily the favourite choice when it comes to  
selecting your ideal stone finishing.



White Sand, CSI-031 C



Salfon, CSI-032 C



Ivory, CSI-033 C



Marengo Grey, CSI-034 C



Latte, CSI-035 C



Left: White Sand, CSI-031 ; Bottom Left: Marengo Grey, CSI-034 ; Bottom Right: Marengo Grey, CSI-034





CraftStone®

FEEL<sup>GOOD</sup> 100%  
LOOK GOOD

[www.craftstone.com.sg](http://www.craftstone.com.sg)

DISCOVER**STONE** DISCOVER**BRICKS**

[www.craftstone.com.sg](http://www.craftstone.com.sg) | a product of Singapore | made in Malaysia



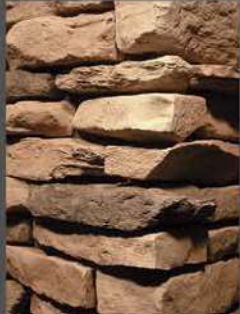
CraftStone®

# Mountain LedgeStone

It has always been challenging to install small and irregular stones. However, the end result is always remarkable.

Mountain LedgeStone comes in so much shapes that it could easily pass off as a real stone. The special selection of colors and matching tonality fools even Expert on which is natural or manufactured.

The different thickness in each piece of Mountain LedgeStone creates great relief and set it as one of the most interesting and beautiful stone.



\* Corner Treatment (CSI-045)



Cashew Brown, CSI-045 C



Chestnut, CSI-046 C



Schist Grey, CSI-047 C



Cabernet, CSI-048 C



Draconia, CSI-049 C







CraftStone®

FEEL GOOD  
LOOK GOOD 100%

[www.craftstone.com.sg](http://www.craftstone.com.sg)

DISCOVER**STONE** DISCOVER**BRICKS**

[www.craftstone.com.sg](http://www.craftstone.com.sg) | a product of Singapore | made in Malaysia



# CraftStone® Stacked Ledgerstone

For those who only settle for the real thing, CraftStone® Stacked Ledgerstone series will not fail to disappoint.

Cast and manufactured from actual dry stacked ledgerstone, these stones are hand picked, trim and remain faithful to nature's creation.

Range from 1" to 6" in height and 3" to 20" in length, Stacked Ledgerstone's straight and angular edges makes laying quick and easier among CraftStone® random series.



\* Corner Treatment (CSI-062)



Sunset, CSI-061 C



Caramel, CSI-062 C



Ashburn, CSI-063 C



Cabernet, CSI-065 C



Draconia, CSI-064 C



Sahara Sand, CSI-067 C



Merlot, CSI-066 C



Apache, CSI-069 C



Urban Mist, CSI-068 C





# CraftStone®

FEEL<sub>GOOD</sub>  
LOOK GOOD 100%

[www.craftstone.com.sg](http://www.craftstone.com.sg)



DISCOVER**STONE** DISCOVER**BRICKS**

[www.craftstone.com.sg](http://www.craftstone.com.sg) | a product of Singapore | made in Malaysia



# CraftStone® Weathered LedgeStone

The largest profile among CraftStone® ledgeStone, the magnificent appeal of Weathered LedgeStone gives a stark contrast and statement to any house.

Cast from stones which has been exposed to years of weathering, Weathered LedgeStone captured the raw and strong details of these stones in their best shapes and look.

Range from 2" to 5" in height and 4" to 20" in length, Weathered LedgeStone is definitely suitable for large scale application.



Draconia, CSI-070 **C**



Cabernet, CSI-071 **C**



Yellow Rustic, CSI-072 **C**



Tangerine, CSI-073 **C**



Silverado, CSI-074 **C**



\* Corner Treatment (CSI-073)



Left: Tangerine, CSI-073 ; Top: Yellow Rustic, CSI-072 ; Bottom: Cabernet, CSI-071





CraftStone®

FEEL GOOD 100%  
LOOK GOOD

[www.craftstone.com.sg](http://www.craftstone.com.sg)

DISCOVER**STONE** DISCOVER**BRICKS**

[www.craftstone.com.sg](http://www.craftstone.com.sg) | a product of Singapore | made in Malaysia



# CraftStone® Balinese Stone

CraftStone® Balinese Stone series offer an authentic finishing and color of Southeast Asia's most popular stone.

Manufactured in standard modular of 20cm in length and 5cm in height, Balinese Stone is versatile and fit into most interior or exterior design.

The elongated and neat cut of this stone can be laid close fit to give a smooth and elegant finishing to any design.



Draconia, CSI-104 C



Golden Pine, CSI-101 C



Mount Uluru, CSI-102 C



Earl Grey, CSI-103 C



Left/Top/Bottom: Earl Grey, CSI-103



# CraftStone®

FEEL<sub>GOOD</sub>  
LOOK GOOD 100%

[www.craftstone.com.sg](http://www.craftstone.com.sg)



DISCOVER**STONE** DISCOVER**BRICKS**

[www.craftstone.com.sg](http://www.craftstone.com.sg) | a product of Singapore | made in Malaysia



CraftStone®

# European CastleStone

Reminiscent of ancient European castles, European Castle Stone replicates the classic and elegance of these majestic stones to perfection.

Random yet design to fit perfectly, European Castle Stone's neat and tidy appearance compliment both modern and traditional design.

Variation in thickness of the stones creates shadow relief that brings out the design and profile in each individual stone.



\* Corner Treatment (CSI-055)



Sauvignon, CSI-053 C



Golden Sand, CSI-054 C



California, CSI-055 C



Galaxy Grey, CSI-056 C





# CraftStone®

FEEL<sub>GOOD</sub>  
LOOK<sub>GOOD</sub> 100%  
[www.craftstone.com.sg](http://www.craftstone.com.sg)



DISCOVER**STONE** DISCOVER**BRICKS**

[www.craftstone.com.sg](http://www.craftstone.com.sg) | a product of Singapore | made in Malaysia



CraftStone®

# Medieval Castle Stone

Replicating the relic of ancient monument,  
Medieval Castle Stone brings back these  
majestic stones for your design.

Medieval Castle Stone has the deepest relief in its profile,  
creating strong shadow relief among the stones.  
The clear and sharp features reveal a stone  
that has withstand the test of time.

The variation in thickness of the stone provides  
shadow relief that brings out the design and  
profile that is hidden in each stone.



Draconia, CSI-051 C



Burgundy, CSI-057 C



\* Corner Treatment (CSI-058)



Gold Dust, CSI-058 C



Charcoal Black, CSI-059 C



Left / Bottom Left: Charcoal Black, CSI-059 ; Bottom Right: Gold Dust, CSI-058





CraftStone®

FEEL GOOD  
LOOK GOOD 100%

[www.craftstone.com.sg](http://www.craftstone.com.sg)

DISCOVER**STONE** DISCOVER**BRICKS**

[www.craftstone.com.sg](http://www.craftstone.com.sg) | a product of Singapore | made in Malaysia



CraftStone®

# Rustic Castle Stone

Among the range of CraftStone® products, Rustic Castle's soft and flatter profile stands out as an ideal alternative.

Rustic Castle creation has been based on inspiration from building blocks used in traditional English castle and mansion.

The tight and neat stacking manner of these stones portray a carefully planned and organised building with a clear purpose, also reflecting the owner's nobility and class.



Draconia, CSI-607 C



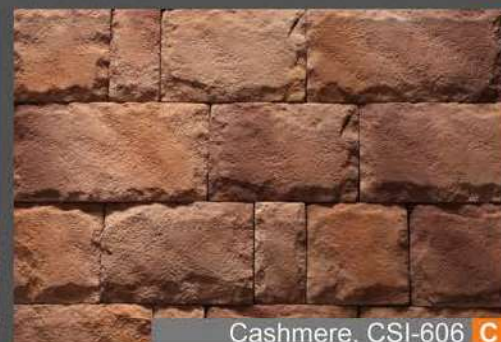
Milano, CSI-601 C



\* Corner Treatment (CSI-601)



Dark Teal, CSI-602 C



Cashmere, CSI-606 C



Left: Milano, CSI-601 ; Bottom Left & Right: Milana, CSI-601



# CraftStone®

FEEL<sup>GOOD</sup>  
LOOK GOOD 100%

[www.craftstone.com.sg](http://www.craftstone.com.sg)

DEUTSCHE BANK  
GALLANT VENTURE LTD

BINTAN RESORTS INTERNATIONAL PTE LTD  
BINTAN RESORT FERRIES PTE LTD

LG ELE  
NIRWA  
FOSTE  
ENERGY

DISCOVER**STONE** DISCOVER**BRICKS**

[www.craftstone.com.sg](http://www.craftstone.com.sg) | a product of Singapore | made in Malaysia



# CraftStone® Sand Stone

Among the smooth and flat surface  
of Sand Stone lies the finest detail  
and vein of a natural sand stone.

While natural sand stone will peel and turn powdery,  
CraftStone® Sand Stone is totally resistant to  
natural elements, retaining its color and  
look even after years of installation.

With a standard 20cm height (and a combination of  
length, 20cm, 30cm and 50cm), Sand Stone is  
easy to install and create a natural look.



Draconia, CSI-609 **F**



Sand Buff, CSI-603 **F**



Dandelion, CSI-604 **F**



Foggy Grey, CSI-605 **F**







CraftStone®

FEEL GOOD  
LOOK GOOD 100%

[www.craftstone.com.sg](http://www.craftstone.com.sg)

**DISCOVERSTONE DISCOVERBRICKS**

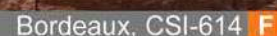
[www.craftstone.com.sg](http://www.craftstone.com.sg) | a product of Singapore | made in Malaysia



CraftStone®

Different from the usual random sizes of most natural stone, Grande Castle's beauty lies in its simple profile and detail, portraying a strong and neat look.

Each Grande Castle Stone is in standard size of 20cm in height and 50cm in length.







CraftStone®

FEEL GOOD  
LOOK GOOD 100

[www.craftstone.com.sg](http://www.craftstone.com.sg)

DISCOVER**STONE** DISCOVER**BRICKS**

[www.craftstone.com.sg](http://www.craftstone.com.sg) | a product of Singapore | made in Malaysia



# CraftStone® Lime Stone

Molded from stone quarried in the upper midwest, Lime Stone faithfully reproduce one of nature's most beautiful stone.

This selection of coarse regular stones allow an unusual design flexibility. The true beauty of Lime Stone lies in its most natural states and CraftStone® has captured the unique character of this stone to its finest detail

The stones range from 1~6" in height and 4~16" in length.



Draconia, CSI-079 C



Glacier, CSI-075 C



Boulder Grey, CSI-076 C



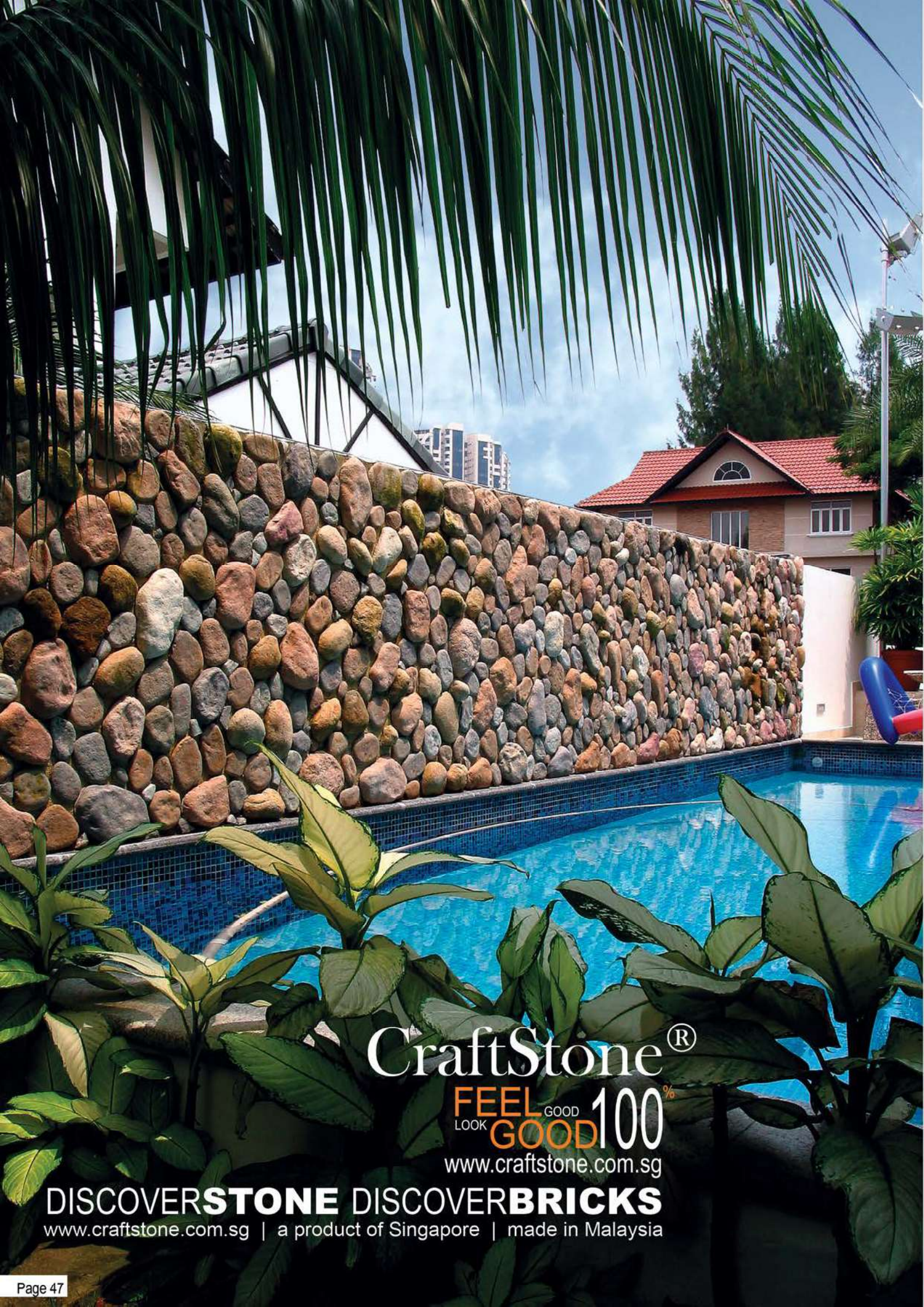
Sunny Vale, CSI-077 C



Cabernet, CSI-078 C







CraftStone®

FEEL<sub>GOOD</sub>  
LOOK<sub>GOOD</sub> 100%

[www.craftstone.com.sg](http://www.craftstone.com.sg)

DISCOVER**STONE** DISCOVER**BRICKS**

[www.craftstone.com.sg](http://www.craftstone.com.sg) | a product of Singapore | made in Malaysia



# CraftStone® River Rock

The raw and smooth finishing of natural stones found in downstream and river side are carefully replicated in CraftStone River Rock.

The washed look of River Rock reveals the origin of these stones that has done most of nature's water landscape.

These irregular stones, ranges from 2" in their smallest dimension and 14" at their largest are highly popular with landscape architects.



\* Corner Treatment (CSI-081)



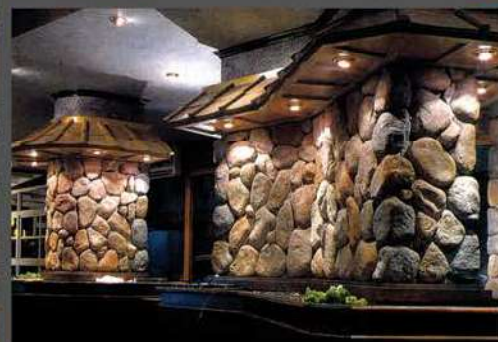
Water Wash, CSI-080 C



Multi Bianco, CSI-081 C



Marigold, CSI-087 C







CraftStone®

FEEL<sup>GOOD</sup>  
LOOK GOOD 100%

[www.craftstone.com.sg](http://www.craftstone.com.sg)

DISCOVER**STONE** DISCOVER**BRICKS**

[www.craftstone.com.sg](http://www.craftstone.com.sg) | a product of Singapore | made in Malaysia



# CraftStone® Quarry Stone

These traditional stones have been used by mankind to build his first home and wall since early civilisation.

Till date, these stones are still widely used in modern design for its strong and remarkable natural appeal.

CraftStone® Quarry Stone series capture the original beauty of these stones and remodeling it to fit today's application.



Cabernet, CSI-082 **C**



Dakota, CSI-084 **C**



Tuscany, CSI-085 **C**



Matador, CSI-086 **C**



Draconia, CSI-089 **C**



\* Corner Treatment (CSI-085)





## Mix & Match

If the conventional type of stone does not appeal to you, mix and match might be the solution!

Tailor a stone design which is unique to suit your preference and style today!



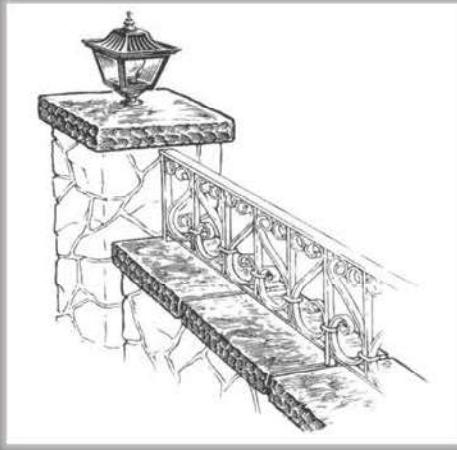
### MOUNTAIN LEDGESTONE + QUARRY STONE



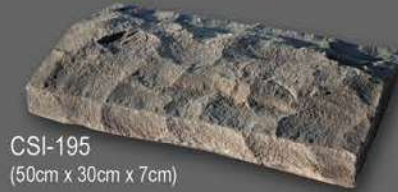
### STACKED LEDGESTONE + QUARRY STONE







### CapStones



CSI-195  
(50cm x 30cm x 7cm)



CSI-196  
(50cm x 30cm x 7cm)

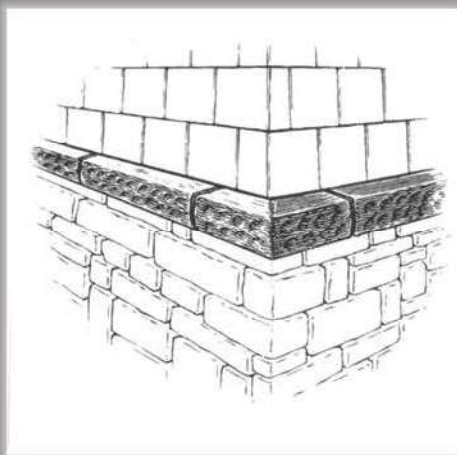
### Pier Cap



CSI-199  
(60cm x 60cm x 13cm)



CSI-194  
(50cm x 30cm x 7cm)



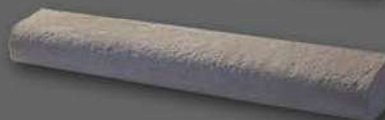
### Watertables & Sills



CSI-183  
(50cm x 6cm x 7cm)

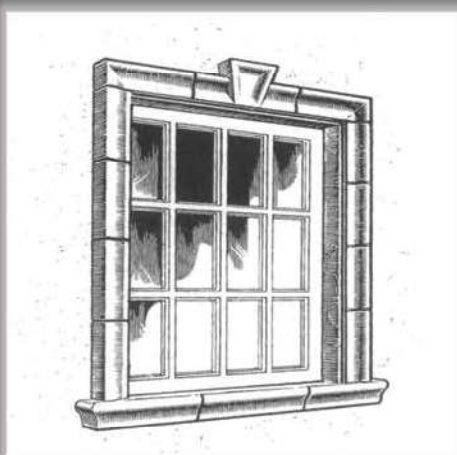


CSI-184



CSI-185

### Chateau Molding



CSI-180  
(H23cm x T24cm x B13cm)

CSI-181  
(50cm x 10cm x 8cm)



CSI-186



CSI-187



CSI-189  
(45cm x 12.5cm x 8cm)



CSI-188



CSI-190



# FloraStone®

by CraftStone®

Comes in multiple floral design and sizes, the new and innovative FloraStone® deliver a touch of elegant and style to your home.

Apart from the high quality signature of all CraftStone®'s products, you will find FloraStone® easy to install and virtually maintenance free for both indoor and outdoor application.

Add a timeless appeal and master piece of art to your home and design with FloraStone® today!

**A10101**



L10 x W10 x 3cm(thk)

**A10102**



L10 x W10 x 3cm(thk)

**A15151**



L15 x W15 x 4cm(thk)

**A14141**



L14 x W14 x 3.5cm(thk)

**A20202**



L20 x W20 x 2.5cm(thk)

**A20201**



L20 x W20 x 2.5cm(thk)

**A20203**



L20 x W20 x 4cm(thk)

**A30301**

L30 x W30 x 4cm(thk)



**A30304**

L30 x W30 x 4cm(thk)



**A30302**

L30 x W30 x 4cm(thk)



**A30305**

L30 x W30 x 4cm(thk)



**A30303**

L30 x W30 x 4cm(thk)



**A30306**

L30 x W30 x 3.5cm(thk)



**\* B30301**

L30 x W30 x 4cm(thk)



**B30302**

L30 x W30 x 4cm(thk)



\* Suitable for foot path application



# FloraStone<sup>®</sup>

## decorative stone motifs

**A30307**

L30 x W30 x 4cm(thk)



**A303010**

L30 x W30 x 4cm(thk)



**A30308**

L30 x W30 x 3.5cm(thk)



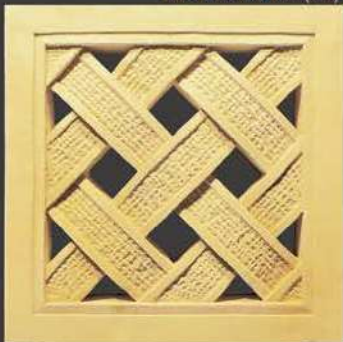
**A303011**

L30 x W30 x 4cm(thk)



**A30309**

L30 x W30 x 4cm(thk)



**A303012**

L30 x W30 x 4cm(thk)



**B30303**

L30 x W30 x 4cm(thk)



**B30304**

L30 x W30 x 4cm(thk)

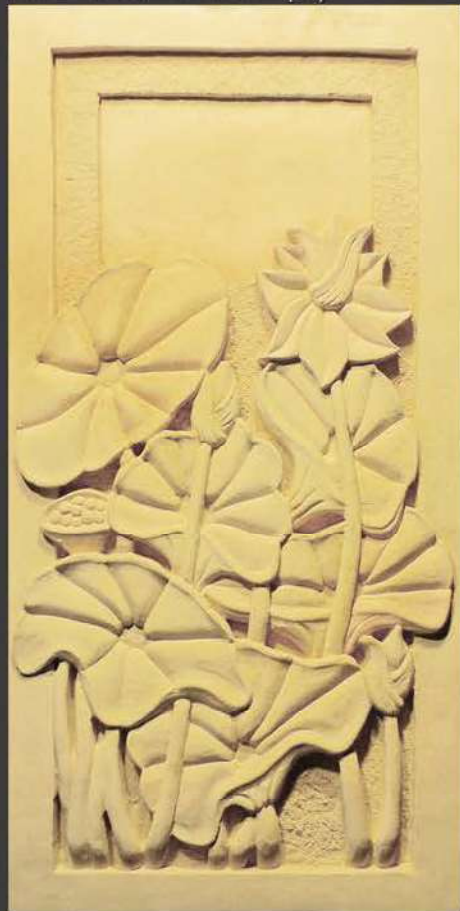




# FloraStone<sup>®</sup>

by CraftStone<sup>®</sup>

**A80401** L80 x W40 x 4cm(thk)



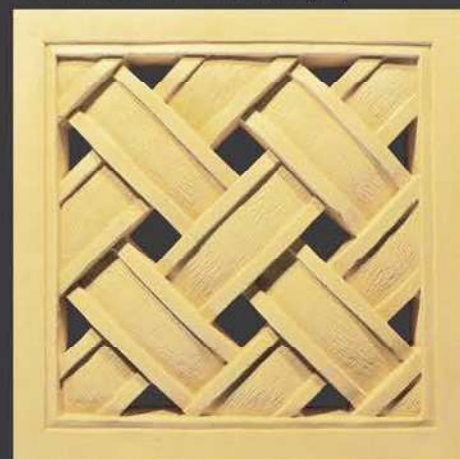
**A41413** L41 x W41 x 4.5cm(thk)



**A41411** L41 x W41 x 3.5cm(thk)



**A41412** L41 x W41 x 3.5cm(thk)



**A61612** L61 x W61 x 4cm(thk)



**A60601** L60 x W60 x 4.5cm(thk)





# FloraStone<sup>®</sup>

decorative stone motifs

A120601 L120 x W60 x 6.5cm(thk)



A120602 L120 x W60 x 6.5cm(thk)







# CraftSeal<sup>+</sup> NanoTechnology

## waterborne sealer

### Product Description

CraftSeal incorporate **Nano Technology** into the waterborne treatment that achieves in-depth penetration and surface hydrophobic effect, filling and coating subsurface pores with crystallization actions. It is permeable to water vapour, allowing treated substrate to dry gradually without staining.

Being non-film forming and UV resistance, it does not leave a glossy finish and will not change the substrate appearance. Mainly used for sealing and waterproofing of concrete and natural stone.

It contains a solid, mild antibiotic that inhibits organic growth without affecting the environment. On application, it surface cure rapidly. Any liquid water collected beneath the surface causes the other active components to penetrate deep into the substrate and crystallized, providing in-depth protection.

### Features

1. Roller, brush, sprayed, injection or dip applied
2. Block water by hydrophobic and crystallization actions
3. Abrasion and UV resistance
4. Can be coated with waterproofing membrane
5. Will not support algae or fungi growth
6. Fine hairline cracks blocking

### Principal Applications

Waterproofing and Dampness sealing of:

- Fairfaced structural concrete
- Natural stones, clays and structural timbers
- Clay and cement bricks
- Concrete surface (e.g. rooftop, slabs, pavement)
- Stain protection on grout and mortar joint
- Cement fiber boards (with surface strengthening effect)
- Walls and column rising dampness (as chemical DPC)



### Application

1. Preparation – Remove all loose materials by high pressure jetting (<2000psi or <14N/mm<sup>2</sup>). Stop observable water leakage by quick-setting hydraulic cement compound. Allow substrate to dry until no free water is observed.
2. General Application – Stir CraftSeal thoroughly before application. Apply CraftSeal liberally without 'ponding' or 'running' on a single application. Wipe off excess surface CraftSeal with a damp cloth or sponge. Allow it to dry for 24 hrs. The initial protection takes effect immediately upon drying. Additional application on dried CraftSeal will results in white crystallization on treated substrate.

**Finishing – The treated substrates do not require further treatment. Strong detergent will reduce the hydrophobic effect, requiring subsequent treatment.**



### Technical Information

Form	Clear free flowing liquid
Flash Point	Not flammable, water borne system
Storage Life	1 year (in original unopened container)
Drying Time	< 1hr (@ 25°C, 65% RH, on dry concrete)
Effective Cure Time	24 to 48 hours (full cure takes 1 month)
Coverage	8~12m <sup>2</sup> /litre (depending on substrate porosity)
UV Resistance	Excellent
Temperature Resistance	Max. 160°C
Crack Blocking	Up to 0.2mm
Depth of Absorption	5 to 21mm (G20 concrete without pressure)
Water Vapour Permeability	< 5% hindrance when compare with respective untreated substrates.
Chemical Resistance	Resistance to all inorganic chemicals except Caustic Soda and KOH. Partially soluble in oxygenated solvent.



### Health and Safety

Under normal use, this product will not exhibit health hazard. Good hygiene practice must be observed, i.e. gloves, goggles and safety equipment should be used when handling chemicals. Wash hand thoroughly before eating and drinking. Any accidental contact must be washed with clean water. Keep out of children reach.





# CraftSeal<sup>+</sup> NanoTechnology

## waterborne sealer



- ☒ UV Resistance
- ☒ Hydrophobic Effect
- ☒ Deep Impregnating
- ☒ Anti Algae Growth
- ☒ Low Sheen
- ☒ Dust and Stain Resistance

\* In 5 & 2 litre packing. Open and use.





## Packing & Dimension Details

Profile	Type	Dimension	Coverage (per Box)	Weight (per Box)	Packing (per Pallet)	Box
Vintage Ledgestone	Flat	L50, 30, 20 x W10cm	0.8 sq.m.	28 kg	32 Boxes	C-001
	Cor	L26,16 x S5 x W10cm	2.2 lin.m.	27 kg	32 Boxes	C-001
Rustic Castle	Flat	L40, 30, 20, 10 x W20cm	0.8 sq.m.	26 kg	32 Boxes	C-001
	Cor	L20 x S6 x W20cm	2.0 lin.m.	20 kg	32 Boxes	C-001
Country Ledgestone	Flat	L42 x W12cm	0.8 sq.m.	29 kg	24 Boxes	C-003
	Cor	L20 x S10 x W12cm	1.9 lin.m.	27 kg	24 Boxes	C-003
Mountain Ledgestone,			0.9 sq.m. / 2.4 lin.m. <sup>#</sup>	32kg / 27kg		
Stacked Ledgestone,			0.8 sq.m. / 1.98lin.m. <sup>#</sup>	30kg / 28kg		
Weathered Ledgestone,	Flat	Random	0.76 sq.m. / 1.82lin.m. <sup>#</sup>	35kg / 33kg	24 Boxes	C-002
Medieval Castle,	Cor	Random	0.8 sq.m. / 1.98lin.m. <sup>#</sup>	33kg / 24kg	24 Boxes	C-002
LimeStone,			0.76 sq.m. / 1.82lin.m. <sup>#</sup>	31kg / 30kg		
River Rock,			0.9 sq.m. / 1.98lin.m. <sup>#</sup>	29kg / 28kg		
Quarry Stone			1.0 sq.m. / 2.4 lin.m. <sup>#</sup>	35kg / 26kg		
Classical Ledgestone	Flat	L50, 30, 20 x W10cm	0.8 sq.m.	33 kg	24 Boxes	C-002
	Cor	L16 x S5 x W10cm	2.4 lin.m.	25 kg	24 Boxes	C-002
Grande Castle	Flat	L50 x W20cm	0.8 sq.m.	33 kg	24 Boxes	C-002
European Castle Stone	Flat	Random	1.15 sq.m.	32 kg	30 Boxes	C-005
	Cor	Random	2.4 lin.m.	24 kg	30 Boxes	C-005
SandStone	Flat	L50, 30, 20 x W20cm	1.0 sq.m.	29 kg	32 Boxes	C-001
CraftBrick	Flat	L20 x W6cm	1.0 sq.m. <sup>#</sup>	21 kg	60 Boxes	C-009
	Cor	L20 x S10 x W6cm	2.1 lin.m. <sup>#</sup>	15 kg	60 Boxes	C-009
Cottage Brick	Flat	L21 x W6	1.0 sq.m. <sup>#</sup>	23 kg	60 Boxes	C-009
Balinese Stone	Flat	L20 x W5cm	0.65 sq.m.	18 kg	60 Boxes	C-009
Urban Cladding	Flat	L50, 30, 20 x W10cm	1.0 sq.m.	30 kg	32 Boxes	C-001
New Linear	Flat	L50 x W10cm	1.0 sq.m.	30 kg	32 Boxes	C-001
Modern	Flat	L50, 30, 20 x W10cm	1.0sq.m.	33 kg	24 Boxes	C-002
Checker	Flat	L50 x W'0cm	1.0 sq.m.	33 kg	24 Boxes	C-002
Clinker Brick	Flat	L29 x W7.6cm	1.25 sq.m. <sup>#</sup>	26 kg	45 Boxes	C-006
	Cor	L29 x S9 x W7.6cm	2.1 lin.m. <sup>#</sup>	19 kg	45 Boxes	C-006

**F** - Only Flat available

**C** - Corner available



# Coverage based with at least 1cm gap between the stones.

\* Flat profiles are packed with **multi-colored** boxes while Corner profiles are packed with **Brown** colored boxes for easy identification.

\* Denotes weight of Flat and Corner boxes respectively.



C-001  
(57 x 28 x 21cm)



C-002  
(56 x 37 x 21cm)



C-003  
(44 x 37 x 26cm)



C-005  
(56 x 22 x 30cm)



C-009  
(57 x 22 x 14cm)



Corner's Carton

## Installation Method



### Step 1:

Ensure wall surface is free from dirt, paint or grease. If necessary, roughen wall and apply mortar on the wall for better gripping. Apply tile adhesive on the entire back side of the stone. Avoid cement stain on stone surface by using tools, instead of bare hand.



### Step 2:

Always start with corner component before laying the flat component. Start for one end and work towards the other. Press each stone firmly into the mortar bed in a sliding motion. Ensure that individual stones are placed as closely as possible, creating uniform joints between them.



### Step 3:

For random series with gaps, fill the joints with color grout using a grout bag. Better results can be archived by selecting color grouts which is similar in color with the stone. It is recommended to use a trowel to archive a smooth and even finishing of color grout inside the joints.



### Step 4:

Before the grout harden, use a stiff brush or wooden racking tool to remove excess grout or mortar from the surface of the stone. You may also use a wet brush to brush away small cement stains that got left behind.

Note: Every CraftStone® boxes is labelled and have the Installation Method printed at the side for easy reference.



# CraftStone®

## Technical Specification

### 25-Year Limited Warranty

CraftStone® products carry a 25-year limited warranty when used on structures that conform to local building codes and installed according to the manufacturer's instruction. Warranty is limited to replacement of defective materials only. Damages resulting from building settlement, wall movement, force contact, contact with chemicals or paint, discoloration due to airborne contamination, staining or oxidation, will not be covered under the warranty.

Warranty is non-transferable and is only limited to the original purchaser.

### Water Repellent

CraftStone® products feature the addition of water-based water repellent that greatly enhances the stone's performance in humid climate. Water repellent is mixed with the composite material during manufacturing, thus providing a more lasting effect than spray, brush or paint method.

### Non-Combustible

CraftStone® products show zero flame spread and zero smoke development.

### General Properties

Material Composition: Portland Cement, Light-Weight Aggregates and Iron Oxide Pigments.

Unit Weight: 33~45kg/m<sup>2</sup> (varies according to profile)

Thickness: 15~60mm (varies according to profile)

### Physical Properties

Water Absorption : <13%

Open Porosity\*: <35%

Compressive Strength\*: >15.0N/mm<sup>2</sup>

Flexural Strength\*: >5.0N/mm<sup>2</sup>

\*Test reference to NBN EN 1926 (1999), NBN EN 12372 (1999)



**Back Row:** Light-Weight Aggregate (Pumice Stone), Sand, BayFerrox's Iron Oxide.  
**Front Row:** Portland Cement, White Cement, BayFerrox's Iron Oxide.





[www.craftstone.com.sg](http://www.craftstone.com.sg)



Cert No.: 022-022  
Eco Friendly  
Building Material



**CraftStone® International Pte Ltd**  
50 Gambas Crescent  
#01-13 Proxima @ Gambas  
Singapore 757022

tel: +65 6362 1588  
fax: +65 6365 6685  
email: [info@craftstone.com.sg](mailto:info@craftstone.com.sg)

© Copyright 2023 - All rights reserved.

CraftStone®, CraftBricks™ are registered trademarks or trademarks of CraftStone® International Pte Ltd, Singapore.

No part of this publication may be reproduced in any form or by any means without the written permission of CraftStone® International.